

# RePlant™ System



**Surgically and  
Prosthetically  
Compatible with  
Nobel Replace**

**Price, Prosthetics,  
Strength, Precision,  
and Thread Design  
Advantages**



**Implant Direct LLC**

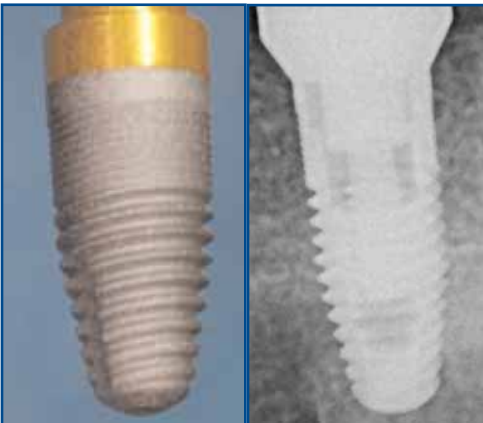


Gerald A. Niznick, DMD, MSD  
 President, Implant Direct LLC  
 Inventor of 30 Dental Implant Related  
 Patents including the Internal  
 Anti-rotational Connection  
 U.S. Patent #4,960,381

**Implant Direct's Mission Statement:**  
 Provide experienced implant dentists with  
 high quality, innovative implants and  
 abutments through internet sales at  
 factory-direct prices.

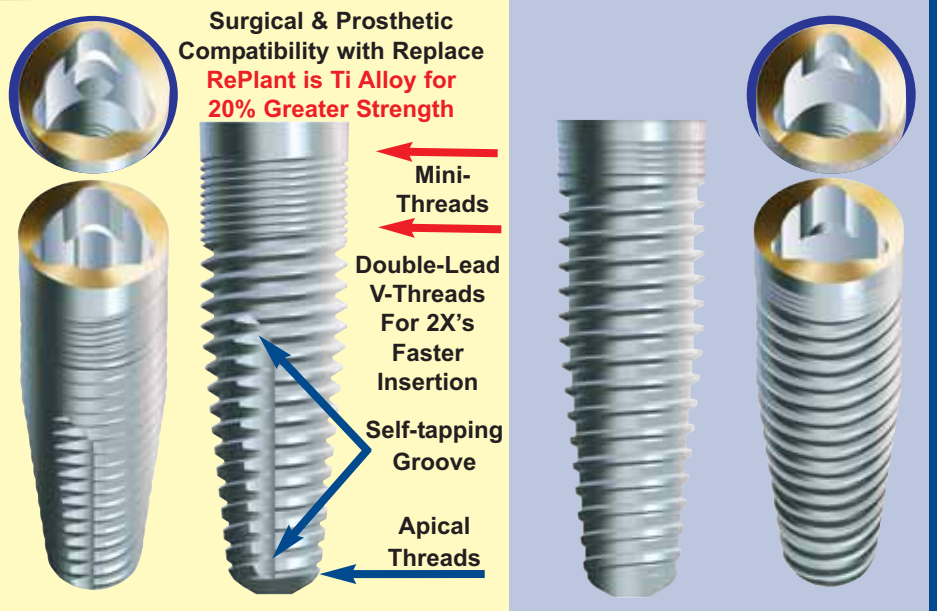
## RePlant, RePlus & ReActive Tri-lobe Implants and Abutments

Implant Direct's RePlant Tri-lobe implant has received FDA marketing approval to claim both surgical and prosthetic compatibility with Nobel Biocare's Replace Tapered Groovy Implant. The RePlant Implant provides 20% greater strength because it is made from medical grade Titanium Alloy compared to the CP Titanium required for TiUnite application. Implant Direct also offers the ReActive and RePlus Implants with an evenly tapered body for soft bone expansion. The wider diameter of the ReActive and RePlus Implant increases the strength of the small diameter implants by approximately 30% compared to the RePlant, and 50% compared to the Replace Implant. RePlant, RePlus and ReActive Implants have mini-threads to reduce stress concentration near the crest of the ridge and double-lead threads to reduce the number of turns needed to insert the implant. All three implants have compatible, color-coded Tri-lobe platforms that accept Nobel Biocare's abutments. Implant Direct offers a complete line of Replace compatible prosthetic components including straight and angled contoured abutments with 30-60-90 degree offset Tri-lobe positions.



**Implant Direct RePlant \$150 Package**  
 includes Cover Screw & Transfer

**Nobel Replace Groovy \$452**  
 with Cover Screw & Transfer



	Ball Attachment with Snap-on Cap & Transfer	Screw Receiving with Snap-on Cap & Transfer	30° Screw Receiving with Snap-on Cap & Transfer	Straight with Snap-on Cap & Transfer	Straight with Contoured Margins	15° Angled with Contoured Margins	Gold with Plastic for Cast Abutment
Compare US List Price							
Implant Direct	\$107	\$85	\$100	\$85	\$85	\$85	\$100
Nobel Biocare	\$206	\$211	\$255	\$191	\$164	\$217	\$202
Cost Savings	48%	60%	61%	55%	48%	61%	50%



27030 Malibu Hills Road  
 Calabasas Hills, CA 91301  
 Phone: 818.444.3333 Fax: 818.444.3400  
 www.implantdirect.com