

Subject:

Product Release: Plastic Castable Abutments - Non-Engaging - Implant Level

Date: 9-22-08

To: Implant Direct Customers

Plastic Castable Abutments for multi-unit screw-retained restorations!!!!!!

Implant Direct introduces the Non-Engaging, Implant Level, **Plastic Castable Abutment** line of prosthetics. The Plastic Castable Abutment is now available for the ScrewPlant 3.7mmD, 4.7mmD, 5.7mmD implant platforms. These plastic abutments are also available for the RePlant, RePlus and ReActive product lines for the 3.5mmD, 4.3mmD, 5.0mmD and 6.0mmD tri-lobe platforms. The abutments are 100% compatible with corresponding tri-lobe platform diameters from competitor product line (NobelBiocare®). The Legacy Implant System of Plastic Castable Abutments for platform diameters 3.5mmD, 4.5mmD and 5.7mmD platform are 100% compatible with other competitors' internal hex systems (Zimmer®, BioHorizons®, and MIS®).

Implant-level non-engaging Plastic Abutments are used **only** in the laboratory for the fabrication of implant-level multi-unit splinted cast frameworks:

- A screw-retained partial denture.
- An implant level multi-unit bar (limited clearance).



The abutment chimney is machined with multiple circumferential grooves providing vertical retention within the wax/burn out resin framework. Similarly the vertical flat surface provides for rotational stability within the framework.

The plastic abutments are modified and incorporated into the wax framework pattern. The laboratory converts the plastic/wax design into a metal of choice utilizing the "Lost Wax" technique providing a "CAST" interface which contacts the top of the implant directly.

******These abutments are *NOT* to be used in single-unit restorations******

The abutments are all supplied with the corresponding fixation screw needed to attach the assembly to the implant.

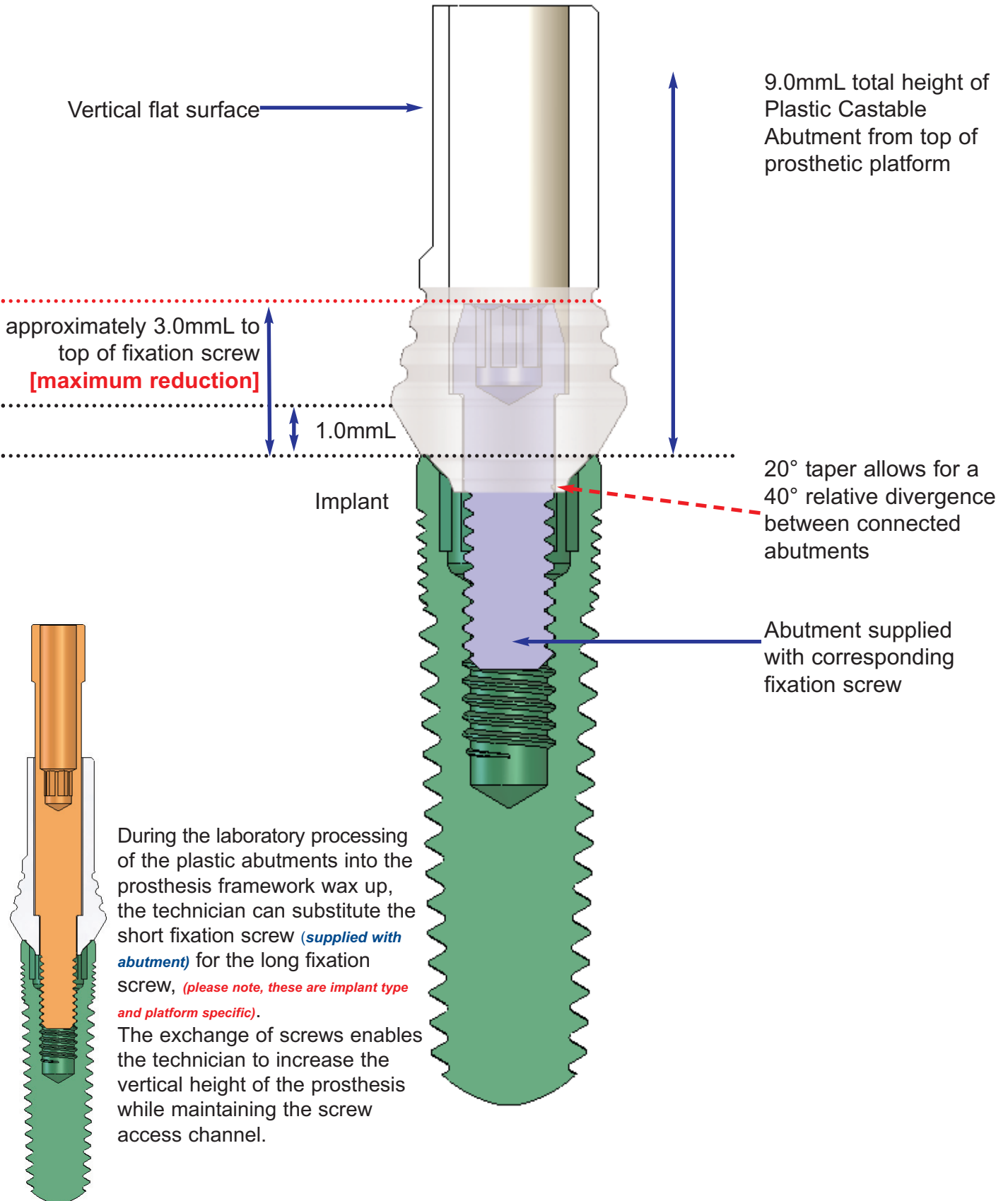
The USA list price for the Plastic Castable Abutments is \$30.00.

27030 Malibu Hills Road, Calabasas Hills, CA 91301

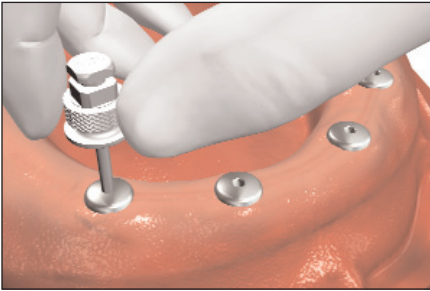
Phone: 818.444.3333 opt2: 888-NIZNICK (649-6425) Fax: 818.444.3400

w w w . i m p l a n t d i r e c t . c o m

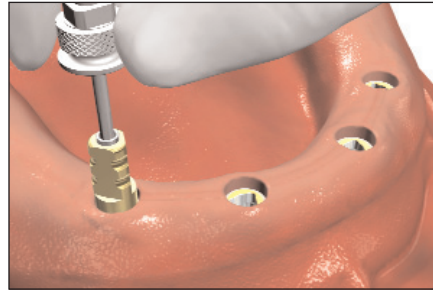
Abutment Dimensions and Specifications:



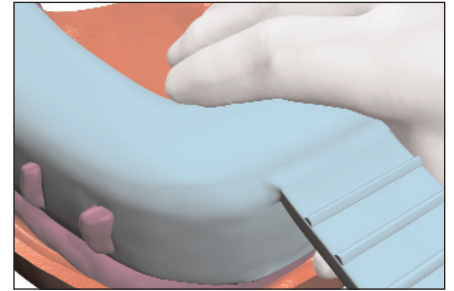
Plastic Non-Engaging Castable Abutment Technique Sheet



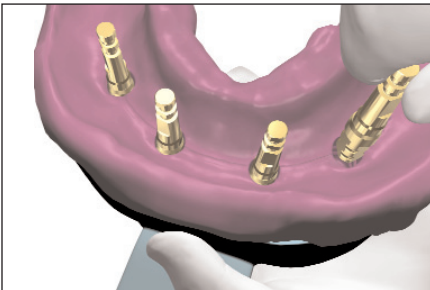
1. Unthread the healing collars from the implant using 1.25mmD Hex Tool.



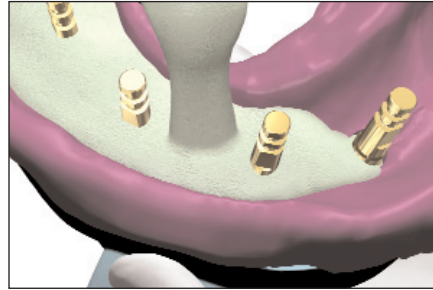
2. Attach platform specific implant level transfers to implants. Insert corresponding fixation screw through transfer body, thread into implant using 1.25mmD Hex Tool.



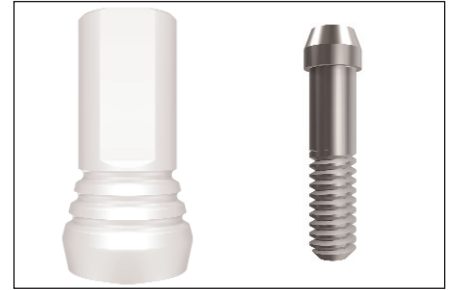
3. Occlude screw access channel with material of choice. Use an elastomeric impression material and make a full arch impression.



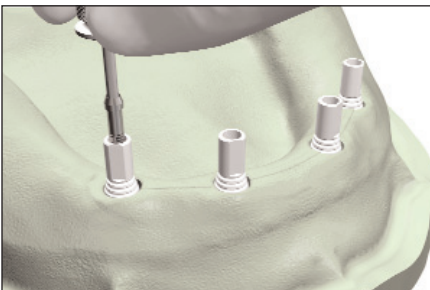
4. Attach transfer to corresponding implant analog and insert assembly into recess within impression. A double-click will confirm correct vertical positioning of assembly within impression material. Assembly procedures change based on either open-tray or closed-tray technique.



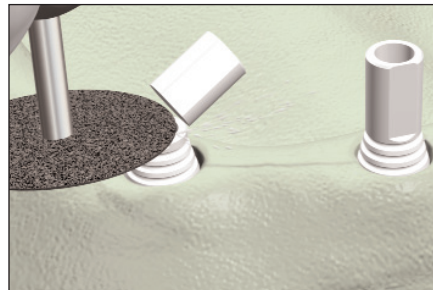
5. Pour impression in die stone, allow to set prior to removal of impression from cast.



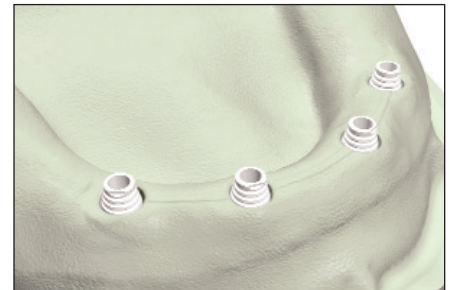
6. Select the Plastic Castable Abutment matching the implant prosthetic platform. Abutments are supplied with corresponding fixation screws.



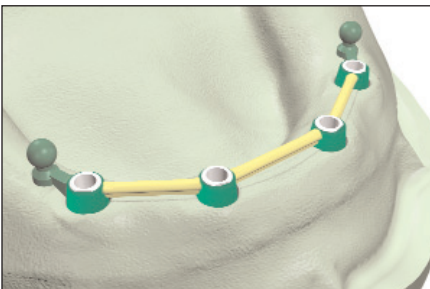
7. Insert fixation screw through plastic abutment, thread into implant analog using 1.25mmD Hex Tool. Finger-tighten **ONLY**, to prevent compression of screw seat.



8. Section the chimney portion of plastic abutment to provide vertical clearance for prosthesis and opposing dentition. **DO NOT** section below scoreline.



9. Use matrix of final tooth position to check for vertical clearance and confirm framework position and design.



10. Use a combination of preformed burnout patterns, wax and burnout resin to fabricate the framework pattern. Sprue and invest framework, do not use a debubbler when investing.



11. Divest the casting using glass bead. Protect the implant interface of framework to ensure an accurate fit. Confirm a passive fit on the working cast. Send to clinician for try-in.



12. Seat the framework on implants and thread fixation screw through the most distal component. Inspect and confirm passive fit. Return the framework to laboratory.

Plastic Castable Abutment Selection Sheet

ScrewPlant® Plastic Castable Abutments

Includes Fixation Screw

Code	Description	Platform	Price
1037-46	Plastic Castable Abutment	3.7mmD	\$30.00
1047-46	Plastic Castable Abutment	4.7mmD	\$30.00
1057-46	Plastic Castable Abutment	5.7mmD	\$30.00



RePlant® Plastic Castable Abutments

Includes Fixation Screw

Code	Description	Platform	Price
6035-46	Plastic Castable Abutment	3.5mmD	\$30.00
6043-46	Plastic Castable Abutment	4.3mmD	\$30.00
6050-46	Plastic Castable Abutment	5.0mmD	\$30.00
6060-46	Plastic Castable Abutment	6.0mmD	\$30.00



Legacy® Plastic Castable Abutments

Includes Fixation Screw

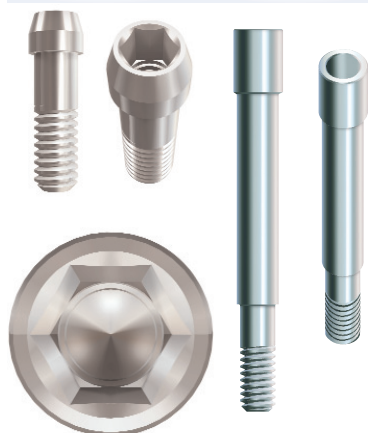
Code	Description	Platform	Price
8035-46	Plastic Castable Abutment	3.5mmD	\$30.00
8045-46	Plastic Castable Abutment	4.5mmD	\$30.00
8057-46	Plastic Castable Abutment	5.7mmD	\$30.00



Fixation Screws and Waxing Screws

1000-01

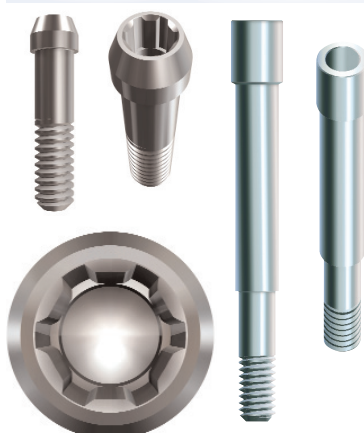
1000-10



Used with **ALL** ScrewPlant and Legacy prosthetic platforms.

1000-22

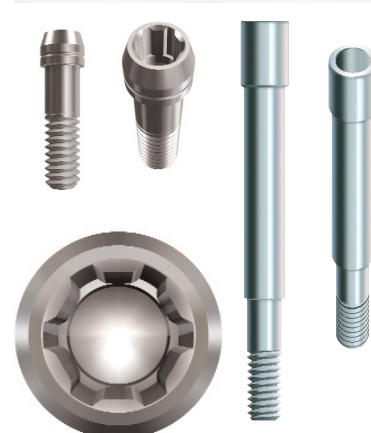
1000-11



Used with RePlant, RePlus and ReActive prosthetic platforms in 4.3mmD, 5.0mmD and 6.0mm. **[1000-22]** has new Dual-Grip feature.

1000-23

1000-12



Used with RePlant, RePlus and ReActive prosthetic platform in **3.5mmD ONLY**. **[1000-23]** has new Dual-Grip feature.