

**Subject:**  
**Product Release: ReActive™ SBM**

**Date: 6-03-08**

**To: Implant Direct Customers**

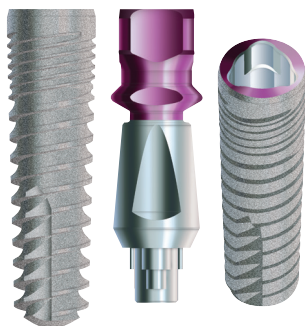
**ReActive SBM implants are now available!!!!**

Produced in three standard implant diameters: 3.7mm, 4.7mm and 5.7mm, ReActive implants are placed using the standard Spectra System drill kit (CST or BST) from Implant Direct. The visible difference is the change from the standard “V” thread to a progressively deeper, flat based thread toward the apex of the implant. The ReActive thread provides increased thread surface area and engagement to improve stability and load-carrying capability in immediate load situations.

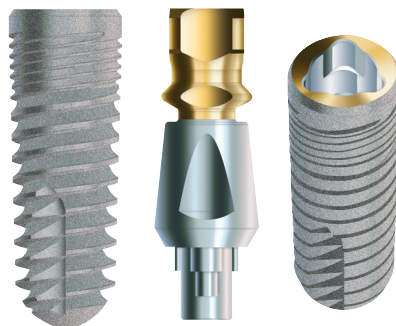
The ReActive Implant includes: evenly tapered body design as with other Implant Direct implants allowing for compression of soft bone during insertion; microthreads for reduced stress at the crest; double-lead threads for faster insertion; and a rounded apex to facilitate implant alignment in the osteotomy during insertion and reduced risk of tearing the sinus membrane.

The implants tri-lobe color-coded platforms, magenta (3.5mmD), gold (4.3mmD) and blue (5.0mmD) are compatible with Nobel Replace® abutments. Implants have a microtextured surface from the top of the implant excluding the color coded prosthetic interface and extends to the apex of the implant. The high quality, cost effective ReActive SBM implants are packaged with a Titanium fixture mount that can be used as a transfer and shortened to a full contour preparable abutment. and surgical cover screw.

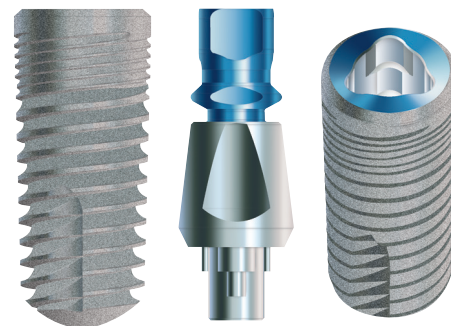
**The USA list price for the ReActive SBM is \$200.00.**



3.7mmD Body  
753708 - 753716  
3.5mmD Platform



4.7mmD Body  
754708 - 754716  
4.3mmD Platform



5.7mmD Body  
755708 - 755716  
5.0mmD Platform

27030 Malibu Hills Road, Calabasas Hills, CA 91301

Phone: 818.444.333 opt2: 888-NIZNICK (649-6425) Fax: 818.444.3400

**w w w . i m p l a n t d i r e c t . c o m**